

A CLASSIC EXAMPLE OF



This well equipped Grand Banks galley has a separate refrigerator and freezer, a three-burner stove with oven and plenty of storage space.

For many cruising families, the Grand Banks 46 represents the perfect size. She offers plenty of interior space, and yet remains easily manageable for a crew of two. Available with a number of interior layout

choices, the 46 can be built either with two forward staterooms or with a galley-down and one forward stateroom. The galley-down option is popular with those who want extra space in the main saloon.

The large owner's aft cabin can be arranged either with two seagoing berths or with a walk-around, queen-sized bed.

In the saloon, comfortable seat lockers and a built-in teak table create a wonderfully friendly and secure atmosphere for enjoying the sights while underway or at anchor. The main saloon of the Grand Banks offers a panoramic



This forward stateroom features an optional island berth. A desk and dresser, a full size hanging locker, and a head with separate shower stall provide all the comforts of home.

CRUISING PERFECTION.



This forward stateroom features 6 1/2 feet of headroom and two large V-berths. A full sized hanging locker, an abundance of drawers and a separate head with shower make this a very liveable, private space for extended cruises.

Grand Banks design. Wide, walk-around decks and aft-cockpit allow for the crew's safe, secure movement while at sea and during docking. Running the boat from the flybridge, the Grand Banks captain has superb visibility and total command of the ship, thanks to the carefully planned steering and navigational area.

Everywhere you look, you will find plenty of storage space for cruising necessities. In the huge cockpit lazarette, in the seat lockers, on the aft cabin roof, and in the forward deck locker, you will

view that is the envy of other boaters. An inside steering and navigational station provides a comfortable, dry haven for the helmsperson.

The GB46 Classic represents an exemplary evolution of the legendary



The main saloon offers panoramic views even while seated. Here, the galley down layout creates a large area for entertaining and relaxing.

find a place for fenders, cleaning supplies, a dinghy, an outboard motor, power cables, dock lines and more.

The engine room, with over five feet of headroom, has ample space for the generator, refrigeration

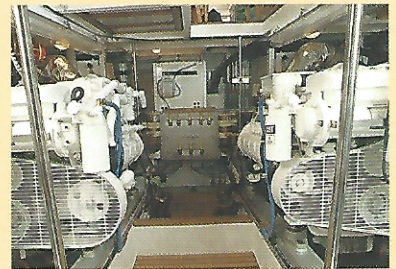
compressor and optional air conditioning equipment. Many owners have installed water makers, inverters, extra generators and a number of other optional accessories in the large, well thought-out

engine room. Several engine options are available. From an economical single engine installation, to twin turbocharged diesels, cruising speeds range from 8 to 14 knots with top speeds to 18 knots.

The GB46 Classic is a beautiful example of how a good idea has been improved over time. Visit your Grand Banks dealer and take a closer look. You'll see why the 46 may be the answer to your cruising dreams.



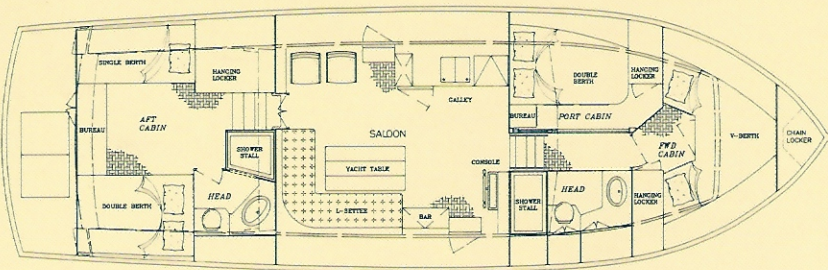
Inside steering allows the helmsperson to stay dry and comfortable. A snack bar is convenient to both the galley and main saloon.



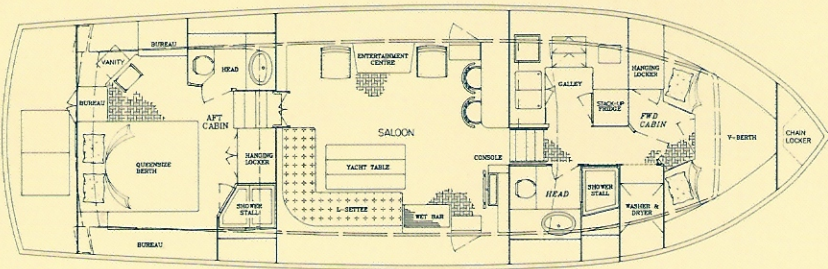
The spacious engine room allows for easy routine maintenance. Fuel from each tank is controlled at a main valve panel for ideal distribution and convenient filter changing.

SPECIFICATIONS

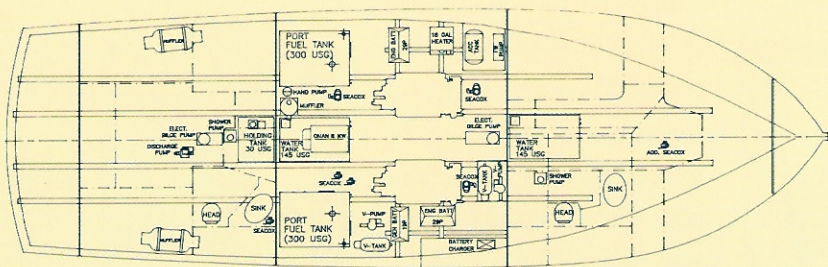
STANDARD ARRANGEMENT



OPTIONAL GALLEY-DOWN



SAMPLE MECHANICAL LAYOUT



GB46 CLASSIC

LOA	47' 2 1/2"	14.39 m
LWL	44' 9 1/2"	13.65 m
BEAM	14' 9"	4.50 m
DRAFT	4' 5 1/2"	1.36 m
DISPL.	39,000 LBS	17,730 kg
WATER	290 GAL	1,100 liters
FUEL	600 GAL	2,270 liters

Manufactured by: American Marine (S) Pte. Ltd.,
26 Jalan Terusan, Singapore 2261

U.S. Representative: Grand Banks Yachts, Ltd.,
563 Steamboat Road, Greenwich, CT 06830

Some photos may show optional equipment.
Right reserved to make future changes without notice.

Please contact your Grand Banks Dealer for more information.

GRAND BANKS®