



## SEA EAGLE OF SHIAN III



Michael Schmidt & Partner  
Yachthandels GmbH  
Rübekamp 5  
D-25421 Pinneberg  
☎ +49 (0) 41 01 51 55 56 6  
📠 +49 (0) 41 01 51 55 57 7

LOA:	67'8" / 20.60m
Year:	1993
LWL:	58'5" / 17.8m
Beam:	17'9" / 5.40m
Draft:	11'6" / 3.50m
Displacement:	40,000kg / 88,200lb (Light)
Ballast:	16,000kg / 35,300lb
Hull Material:	GRP
	Engine: 1 x Perkins

### Sabre M200Ti

Designer:	German Frers
Accommodation:	8 berths in 4 cabins
Builder:	Nautor Swan
Location:	Scotland, UK
Price:	£575,000 VAT paid

• •

### Disclaimer

*These particulars have been prepared from information provided by the vendors and are intended as a general guide to the yacht, their accuracy cannot be guaranteed by us. The purchaser should confirm details of concern to them by survey or engineer's inspection. The purchaser should also ensure that the purchase contract properly reflects their concerns and specifies details on which they may wish to rely.*

**Brokers Comments:**

First launched in April 1993, SEA EAGLE was built just beautifully as we would expect of Nautor Swan. She had a very comprehensive specification and is perfect as a powerful and fast cruising yacht or for regattas. Her current owners have lavished care and resource on the yacht to ensure that she is in tip top shape. Shortly after purchase in the winter of 2011, they did a refit to SEA EAGLE and added the following

- Sailor Fleet BB250 with additional handset in owner's cabin.
- Icom M505 VHF and Command Mic at helm.
- Icom M801 E SSB.
- TH Bury cell phone cradle with external antennae.
- Furuno SC50 satellite compass.
- Furuno GP 32 GPS with data distribution through isolated buffers.
- Raymarine ST60 speed depth and wind systems.
- Additional St60 wind and graphic displays.
- Raymarine SPX30 and 2 off ST6002 control Autopilot system (hydraulic pump also replaced).
- Ruggedized shuttle style comms pc with 17" glass fronted monitor.
- BEP 2 zone Gas alarm system.
- Muster alarm system.
- All navigation light fittings replaced (Aqua signal series 55).
- 2 off Furuno Navnet 3D MFD 12 displays.
- Maxsea time zero explorer software loaded onto comms pc and interfaced to Furuno system.
- Furuno DRS4D digital radar scanner.
- Furuno FA50 AIS transceiver.
- Replaced Radio batteries.
- Mood lighting in saloon.
- Entertainment system consisting of BOSE lifestyle 235 system in saloon, Blu-ray player, exterior BOSE 135 speakers in both cockpits.

The updates and improvements have been ongoing through their ownership of the yacht. Below are some other notable updates through the yacht's life –

- New 12mm teak deck laid in 2008.
- New Awlgrip Aristo painted topsides in 2008.
- Full anti-osmosis treatment including nine coats of Epoxy in 2008.
- Full Engine revision including new turbo charger in 2008.
- New Navtec rod rigging in 2015.
- Mast removed and serviced in 2007; mast and boom painted 2015.

SEA EAGLE is currently laid up ready for her new owner. She has also been coded to MCA charter standards but please note, some items of equipment may require servicing before she can be re-coded for the current season.

**Owners Comments:****Disclaimer**

*These particulars have been prepared from information provided by the vendors and are intended as a general guide to the yacht, their accuracy cannot be guaranteed by us. The purchaser should confirm details of concern to them by survey or engineer's inspection. The purchaser should also ensure that the purchase contract properly reflects their concerns and specifies details on which they may wish to rely.*

SEA EAGLE OF SHIAN has been a marvelous yacht for our family. We have raced and cruised with her and had the best of times with her. She is responsive, powerful and very comfortable. She is also a stunning looking yacht that attracts admiring glances wherever she goes, and it has been a privilege to own and upgrade her. However, with a growing family and many other calls on our time, we are not able to commit to the sort of sailing programme that she deserves, so we have reluctantly decided that she must be sold.

**Construction:**

*RCD Status: Our understanding is that the yacht is exempt from the essential safety requirements of Directive 94/25EC (Recreational Craft Directive) as she was built and placed into use within the EU prior to 1998.*

**Hull Construction:**

- The hull is of single skin construction using glass/aramid hybrid fibre reinforced polyester laminate.
- A high proportion of the fibres are unidirectional, giving a stiff laminate with excellent strength and fatigue properties.
- A synthetic surface mat is applied after the gelcoat for increased resistance against water penetration.
- Structural bulkheads are of plywood laminated to hull and deck with foam strips between.
- Stiffener flanges are unidirectional lay-ups over foam cores.
- Engine beds are of GRP with steel inserts.
- Special care is taken to assure rigid foundation and proper adhesion to hull.
- The mast is stepped through the deck onto a galvanised steel mast step.
- Topsides are painted in Aristo Blue Awlgrip paint (2008).
- Boot top, cove stripe and coaming stripe are white.
- Osmosis treatment in 2008 including nine coats of West System epoxy, white antifouling paint May 2008/2011.
- Sea cocks of bronze for all through-hull connections below waterline, finished flush with outside and located in accessible positions.
- Inboard side of sea cocks fitted with stud long enough to take two hose clamps.

**Deck Construction:**

- Deck is of GRP sandwich construction with foam core, and glued and through-bolted to the hull.
- High-density core under deck fittings.
- Exterior woodwork (new 2008); Laid teak 12 mm thick on bridge deck, cockpit soles and seats, glued and vacuum bagged without screws.
- Teak sheet and halyard cleats.
- Teak toe rail with two pair of fairleads amidships and two pairs on bow.

**Keel & Rudder:**

- The keel is a lead casting with antimony.
- Cast-in keel bolts are of high-tensile stainless steel.
- Of foam filled GRP with high strength stainless steel stock, supported by two roller bearings.
- Weed deflector in front of rudder.

**Machinery:**

*Engine & Gearboxes (Revised in 2002 and 2008, new turbocharger in 2008):*

**Disclaimer**

*These particulars have been prepared from information provided by the vendors and are intended as a general guide to the yacht, their accuracy cannot be guaranteed by us. The purchaser should confirm details of concern to them by survey or engineer's inspection. The purchaser should also ensure that the purchase contract properly reflects their concerns and specifies details on which they may wish to rely.*

- Perkins Sabre M200Ti 6-cylinder turbo-charged and intercooled marine diesel engine, output 165 kW/225 HP at 2500 rpm, with Hurth HSW 630 a reverse/reduction gear 2.52:1.
- Engine space internally sound insulated fire resistance meeting SOLAS B-15 requirements.
- Drip tray integral with engine bed.
- Wet exhaust system with fibreglass silencer, discharge through transom.
- Silencer provided with drain tap.
- Thermostat-controlled fresh water cooling with heat exchanger on engine.
- A separate heat exchanger for the consumable fresh water is included in the same circuit making hot water available whenever the engine is running.  
Seawater intake with strainer.  
Discharge through exhaust system.

#### *Propulsion & Steering:*

- Propeller shaft made of high-tensile corrosion resistant steel with flexible shaft coupling. PSS shaft seal.
- Shaft supported by rubber bearing at bracket and stern tube.
- Three-bladed feathering propeller, diameter 800 mm by LUKE.
- Cable steering gear sheaves provided with guards to prevent jamming.
- Aluminium steering quadrant bolted to rudder stock.
- 70" recessed destroyer type wheel with elkhide cover, 1.4 turns H.O. to H.O.
- Pedestal with roller bearings and friction brake. Emergency tiller stowed in lazarette.
- 11.5 HP MAXPOWER retractable powered by dedicated hydraulic power pack.

#### *Engine Cockpit Controls:*

- Engine control ON/OFF.
- Start and stop buttons/glow button.
- Paralleling button for start and service batteries.
- Single lever control of throttle and gear shift.
- Coolant temperature gauge.
- Oil pressure gauge for engine.
- Tachometer with hour meter.
- Warning light and audible alarm for low oil pressure/high coolant or exhaust temperature.
- Control light for starting and service battery charging.
- Fuel tank gauges.

#### **Electrical Systems:**

##### *Voltage Systems:*

- 24v DC system with insulated return, wires are dimensioned to minimise voltage drop.
- 230v AC is a three-wire system.
- For lightning protection the headstay, backstay (unless used as SSB antenna), main shroud chain plates and mast step are grounded to ballast keel bolts with heavy cable.
- The AC system can be fed either by a diesel generator, or a 230 V shore power inlet.
- Each inlet is provided with polarity alarm, main switch and land connecting cable.

##### *Battery Banks:*

- 24 V 650 Ah for general service
- 24 V 240 Ah Radio batteries.

#### **Disclaimer**

*These particulars have been prepared from information provided by the vendors and are intended as a general guide to the yacht, their accuracy cannot be guaranteed by us. The purchaser should confirm details of concern to them by survey or engineer's inspection. The purchaser should also ensure that the purchase contract properly reflects their concerns and specifies details on which they may wish to rely.*

- 24 V 240 Ah for main engine start (2017).
- 12 V 135 Ah for diesel generator (2017).
- All battery sets are located in ventilated GRP boxes. Paralleling button for main engine starting batteries and service batteries.

**Battery Chargers:**

- The service batteries are charged by a 140 A alternator on the main engine.
- 1 x Victron inverter (2015).
- Main engine starting batteries are charged by a 55 A alternator on the main engine.
- Diesel generator starting battery is charged by a 50 A alternator on the generator engine.

**Generator:**

- Koehler 17KV<sub>a</sub> 50 Hz Generator (New 2007) with sound shield, electronic governor and capacitors. Injectors serviced 2017.

**Shore Power:**

Shore power inlet #1 230 V AC 50 A.

- Shore Power inlet #2 115 V 50 A via 6 kVA transformer.

**Plumbing Systems:****Fresh Water & Water Heating System:**

- Sea water hoses of reinforced PVC tubing, fresh water hoses of nylon and copper tubing.
- Pressurised and heated water.
- Single lever mixing faucets type Oras for washbasins, galley sinks, and showers.
- The consumable water can be heated either with engine cooling water or with a heating elements working on AC.
- Hot water tank capacity 2x 60 ltr (15.8 US gallons).
- Electrical deck wash/fire pumps with connection on fore and aft deck, 15 m (50 ft.) hose provided.
- Sea water tap in galley connected to deck wash pump.

**Watermaker:**

- 190lt/hr Marincos watermaker (New Membranes 2008).

**Bilge Pumps:**

- Three bilge pumps - one electrical submersible 140 ltr/min (37 US gallons) with automatic switch, and two manual Whale Titan 100 ltr/min (26 gallons).

**Tankage:**

- All fuel and water tanks are of welded stainless steel, and provided with baffles, inspection covers, sounding plug, and vent pipes.

**Fuel:**

- Fuel Capacity 1,870 Litres in four tanks.
- Shut-off valves for each tank.
- Fuel valve chest with return valve for each tank.

**Disclaimer**

*These particulars have been prepared from information provided by the vendors and are intended as a general guide to the yacht, their accuracy cannot be guaranteed by us. The purchaser should confirm details of concern to them by survey or engineer's inspection. The purchaser should also ensure that the purchase contract properly reflects their concerns and specifies details on which they may wish to rely.*



- A dual Racor fuel filter/water separator with water alarm on feed line to engine and a single SWK 2000/5K for diesel generator.
- Tanks are vented to deck edge.

*Fresh water:*

- Water capacity 1,580 ltr (417 US gallons), in four tanks with one filler line from deck terminating at valve chest under saloon floor.
- Water tank level gauges, type VDO.
- Tank vent pipes terminate at galley sink.

*Grey/Blackwater holding tanks:*

- Shower sump tanks are of GRP, integral with the moulded floor liner.
- Sinks and wash basins
- Galley sinks drained through sea cock.
- Wash basins and showers drain to sump tanks, capacity about 60 ltr (16 US gallons) each.
- Sump tanks are emptied by manual Whale pump or electrical pump.
- Outlets above waterline.

*Gas:*

Electric solenoid shut-off near cooker, gas bottle stored in vented locker below helmsman seat. BEP 2 zone Gas alarm system. Muster alarm system.

**Navigation Equipment:**

- Extensive supply of Navigation equipment included in sale.
- Navigation and Communication system comprehensively upgraded in 2011, consisting of:
  1. Sailor Fleet BB250 with additional handset in owner's cabin.
  2. Icom M505 VHF and Command Mic at helm.
  3. Icom M801 E Single Side band.
  4. TH Bury cell phone cradle with external antennal.
  5. Furuno SC50 satellite compass.
  6. Furuno GP 32 GPS with data distribution through isolated buffers.
  7. Raymarine ST60 speed depth and wind systems.
  8. Additional ST60 wind and graphic displays.
  9. Raymarine SPX30 and 2 off ST6002 control Autopilot system (hydraulic pump also replaced).
  10. SEAME active radar reflector.
  11. Ruggedized shuttle style comms pc with 17" glass fronted monitor.
  12. 2 x Furuno Navnet 3D MFD 12 displays.
  13. Maxsea time zero explorer software loaded onto comms pc and interfaced to Furuno system.
  14. Furuno DRS4D digital radar scanner.
  15. Furuno FA50 AIS transceiver.
  16. Furuno FAX30 weather fax/ Navtex.
  17. Replace Radio batteries.
  18. Relace generator battery.

**Domestic Equipment:**

*General:*

**Disclaimer**

*These particulars have been prepared from information provided by the vendors and are intended as a general guide to the yacht, their accuracy cannot be guaranteed by us. The purchaser should confirm details of concern to them by survey or engineer's inspection. The purchaser should also ensure that the purchase contract properly reflects their concerns and specifies details on which they may wish to rely.*

- Candy washing machine.

#### *Galley:*

- Double Stainless steel sinks.
- Counter tops in Blue/Grey Corian.
- Front loading double-door refrigerator 240 ltr (8.5 cu.ft.).
- Cooled vegetable locker 240 ltr (8.5 cu.ft.).
- Top loading freezer 140 ltr (5.0 cu.ft.).
- Whirlpool Microwave oven (powered by 220v inverter) (2015).
- Insulated and sheathed space for 4-burner gas stove and oven.
- Gas cooker refurbished (2017).
- Overhead extractor hood with light.
- Miele Dishwasher (2015).
- Lockers, drawers and storage areas.
- Drawer type drinks refrigerator (24 volt).
- Teak bread board.
- Crockery, cutlery, etc. included in sale.
- 2 x Iceberg refrigeration unit with hold-over plates for refrigerator and freezer.
- Thermostat control enabling freezer to be used as a refrigerator.

#### *Heads/Showers:*

- Equipped with porcelain washbasin, mirrors, telephone type shower, towel rack, soap and paper holder, trash bin, and lockers. New sink fitting and shower fittings to all heads (2015).  
White GRP lining up to washbasin level.  
Separate shower compartment for Owner with bulkhead mounted shower head.  
Deck shower on the starboard side aft.
- For midships toilet alternatively to stainless holding tank with indication at 3/4 and 1/1 level.
- Holding tank emptied overboard by electrical pump.
- Jabsco electric quiet flush WCs in all heads compartments (2015); plumbed with the option of salt and fresh water flush (2015).

#### *Heating & Ventilation:*

- Air Conditioning reverse-cycle Condaria model 75022.
- Fan coils throughout interior.
- Eberspacher Diesel heater linked to fan coils.
- Natural ventilation in cabins with Dorade type inlets.
- Exhaust ventilators in heads and in galley.
- 12v Hella Turbo fans throughout interior.
- Air inlet with water trap, outlet with blower.

#### *Entertainment:*

- Waterproof Forward & Aft Cockpit Speakers.
- Retractable TV SHARP AQUOS – LC20E1E in owner's cabin, with DVD player.
- 2011 entertainment system in saloon.
- BOSE lifestyle 235 system in saloon.
- Blu-ray player in saloon.

#### **Disclaimer**

*These particulars have been prepared from information provided by the vendors and are intended as a general guide to the yacht, their accuracy cannot be guaranteed by us. The purchaser should confirm details of concern to them by survey or engineer's inspection. The purchaser should also ensure that the purchase contract properly reflects their concerns and specifies details on which they may wish to rely.*

- Exterior BOSE 135 speakers in both cockpits.
- Starboard side bookshelf includes television with combination VHS/DVD player in saloon.

#### *Lighting:*

- All navigation light fittings replaced 2011 (Aqua signal series 55).
- 2011 Mood lighting in saloon

#### **Accommodation:**

##### *Summary of Accommodation:*

- All joinery work is done in accordance with the best yacht practice, using first-grade materials.
  - Teak with hand rubbed satin finish is used for all visible woodwork.
  - Floorboards with laid teak veneer, providing access to the bilge.
  - Quick pins provided for lifting the floorboards.
  - Topsides where visible lined with teak battens.
  - Overhead lined with removable paneling.
  - Wooden trim inside overhead hatches renewed in 2008.
  - Roller blinds/mosquito screens for hinged deck hatches from 0.5 m width upwards.
  - Cabinets, tables, bureaux, seats, dressers etc. have rounded corners.
  - Doors, partitions and paneling throughout are teak-faced plywood.
  - Door sills have stainless steel chafing pieces.
  - Self-engaging latches with bumpers to hold doors in open position.
  - Hanging lockers are equipped with rods and hooks and have bottom drawers where possible, and their doors are provided with louvers for ventilation.
  - Drawers are secured with latches.
  - Wooden companionway ladders with non-slip steps.
  - Hard bottom berths equipped with canvas leeboards.
  - Complete supply of bed linen.
  - Dark blue covers with white stripes for settees.
- Complete supply of towels for interior and exterior. White blinds in saloon.

##### *Hatches and Portlights:*

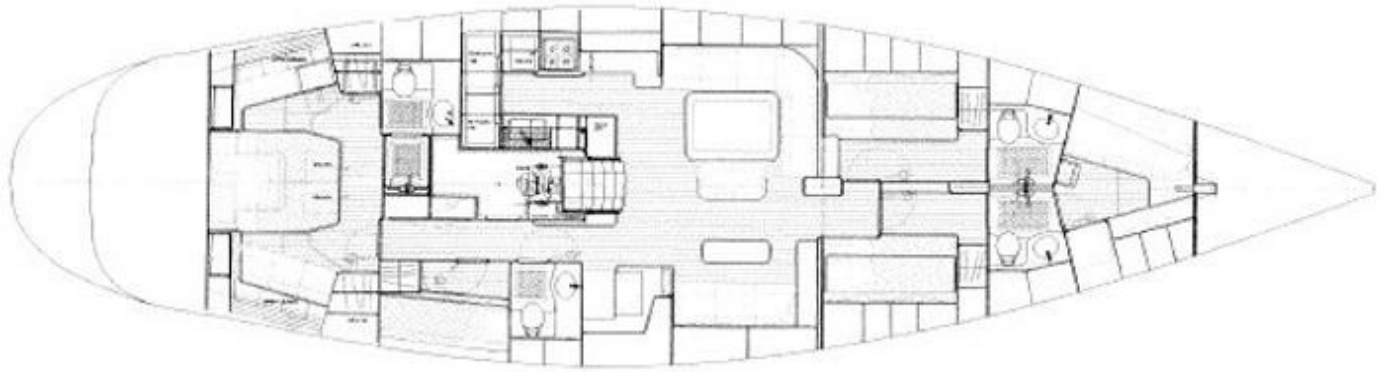
- On fore deck two-part hinged aluminium hatches to deck stowage, and anchor windlass. • Sliding hatch of aluminium and tinted Perspex above sail locker
- Giot deck hatches and portholes.
- Main companionway lockable sliding hatch of tinted acrylic.
- In aft cockpit hinged GRP hatches to lazarette.
- Gas locker under helmsman's seat.
- Liferaft lockers in aft cockpit.

##### *Internal Layout:*

#### **Disclaimer**

*These particulars have been prepared from information provided by the vendors and are intended as a general guide to the yacht, their accuracy cannot be guaranteed by us. The purchaser should confirm details of concern to them by survey or engineer's inspection. The purchaser should also ensure that the purchase contract properly reflects their concerns and specifies details on which they may wish to rely.*





*Description of layout from forwards:*

*Crew Cabin:*

- Single berth installed; though no cushion.
- Storage lockers on port side outboard.

*Forward Guest Cabins (Port and Starboard side, forward of saloon):*

- Double lower berths.
- Pullman upper berth each side.
- Hanging lockers and drawers provided.
- Each cabin has en suite head with integrated shower.

*Saloon:*

- U-Shaped dining settee to port with seating for eight persons around large teak table.
- Settee to starboard with coffee table.
- Bookshelves and lockers to port and starboard,
- Bar and liquor locker in SB forward corner.

*Galley:*

- The U-shaped galley is located to port amidships.

**Disclaimer**

*These particulars have been prepared from information provided by the vendors and are intended as a general guide to the yacht, their accuracy cannot be guaranteed by us. The purchaser should confirm details of concern to them by survey or engineer's inspection. The purchaser should also ensure that the purchase contract properly reflects their concerns and specifies details on which they may wish to rely.*

#### *Navigation Area:*

- Forward facing chart table with seat and storage for charts (completely renewed in 2011 refit).
- Provided with shelves, lockers, drawers and space for instruments and radios on angled panels.
- Main switchboard on engine room bulkhead.
- Aft of switchboard entrance to engine room.
- Oilskin locker aft of engine room door.

#### *Aft Guest Cabin:*

- Forward of the owner's cabin along the starboard side corridor, there is a guest cabin with upper and lower berths and en suite head with shower.
- Also along the aft corridor, there is a Candy washing machine hidden behind a panel on the inboard side.

#### *Owner's Cabin:*

- The master stateroom expands the full beam of the yacht with centreline double berth and an en suite head and separate shower stall.
- To port, a vanity desk with lockers and mirror above, to starboard, a settee that doubles as an additional berth.
- On both port and starboard sides, there are hanging lockers, bookshelves, drawers and cabinets.

#### **Deck Equipment:**

##### *Rig:*

- Stainless steel stemhead fitting with headsail tack hooks and two anchor rollers.
- Stainless steel chainplates bolted to reinforced mast bulkhead.
- Backstay chain plate attached to hull structure.
- Roller bearing deck blocks for halyards and slab reefing at mast partners.
- Aluminium genoa sheet tracks with recirculating ball bearing cars.
- Aluminium staysail sheet tracks with recirculating ball bearing cars.
- Screw-in fittings for spinnaker aft guy blocks each side amidships.
- Screw-in fittings for trysail sheets.
- Stowage position for runners near main shrouds.
- Aluminium main sheet track with recirculating ball bearing car.
- Roller fairleads at stern.
- Aluminium mast collar.
- Scantlings to Nautor's standards.
- Spars built of extruded aluminium alloy sections.
- Triple spreader masthead rig with discontinuous shrouds.
- Nautor mast of oval section, with external tangs and Harken System C track for full-batten mainsail.
- Tapered and welded masthead with two spinnaker cranes and three Harken halyard sheaves.
- Internal wiring, shielded in PVC tubes secured to mast.
- Open spreaders of polished stainless tubing with adjustable longitudinal angle.
- Spinnaker gooseneck track with line driver tackle on forward side.
- One toggle pin each side for jockey pole.
- Neoprene mast boot with Dacron cover.
- Standing rigging (2015); of Navtec Nitronic rod., Babystay, inner forestay, runners and checkstays in Dyneema.

- Shroud rollers on babystay and main shrouds.
- Boom of oval, tapered section with internal two-part outhaul led to Lewmar 30 CST winch, and arranged for slab reefing with three reefing lines.
- One spinnaker pole and one jockey pole of round section with appropriate fittings.
- Spinnaker pole provided with recessed handles.
- Removable aluminium bowsprit prod attached to stemhead fitting.
- Rig Hydraulics for backstay adjustment, one Navtec hydraulic cylinder; for babystay and inner forestay adjustment under-deck cylinders.
- Hydraulic boom vang with high-pressure return.
- Four-function one-gauge System 50 central control panel in aft cockpit.

#### *Winches:*

- 2 x Primaries Harken 1100 ST hydraulic winches with removable pedestal coffee grinders.
- 2 x Secondary Harken 980.2 ST hydraulic.
- 1 x Main Halyard Harken 66.3 ST hydraulic.
- 1 x Main Sheet Harken 66.2 ST hydraulic.
- 1 x Main Sheet Harken 66.2 ST manual.
- 1 x Halyard Harken 66.2 ST hydraulic.
- 2 x Halyards Harken 66.2 ST manual.
- 1 x Topping lift Harken 56.2 ST manual.
- 1 x Staysail Halyard Harken 56.2 ST manual.
- 2 x Traveller Harken 42.2 ST manual.
- 2 x Runners Harken 66.2 ST hydraulic.

#### *Sails:*

- North Sail Spectra (main sail 2008).
- Shore Sail Dacron 140% roller furling Genoa (North Sail 2002).
- Doyle storm jib.
- Doyle storm trysail.
- North Sails asymmetrical spinnaker (2000).

#### *General:*

- Folding hydraulic bathing platform on transom.
- Cockpit table for forward cockpit.
- Pulpit, pushpit and lifeline stanchions 750 mm high of stainless steel, with bases bolted through deck. Spacing conforming to ORC requirements.
- Pulpit of the open type, and equipped with a seat.
- Stainless lifelines.
- Gates in lifelines each side amidships.
- Socket for flag pole on pushpit.
- Two screw-in deck blocks for aft guy/trysail sheets.
- Two pairs of roller fairleads with separate stoppers for genoa, one pair with separate stoppers for staysail.
- Bosun's chair.
- Flag pole.
- Four 6 kg aluminium LPG tanks including securing arrangements and pressure Regulator.